



# Council Agenda Report

To: Mayor Grisanti and the Honorable Members of the City Council

Prepared by: Rob DuBoux, Public Works Director

Approved by: Steve McClary, Interim City Manager

Date prepared: March 7, 2022 Meeting date: March 28, 2022

Subject: Westward Beach Road Improvements Project Update

---

**RECOMMENDED ACTION:** 1) Receive an update on the Westward Beach Improvements Project; and 2) Provide direction to staff on any design modifications.

**FISCAL IMPACT:** Funding for this project was included in the Adopted Budget for Fiscal Year 2021-2022 in Account No. 310-9082-5100-00. The majority of this project is funded through the Los Angeles County Measure M -Active Transportation Program administered by the Los Angeles County Metropolitan Transportation Authority (Metro). The Measure M funds allocated for this project are set to expire June 30, 2023. Depending on Council's direction regarding project design modifications, the resulting project may no longer be eligible for Measure M Active Transportation funds and additional appropriations may be required to complete the project as modified.

If design modifications exclude the proposed walkway, the project no longer qualifies as an active transportation project and Measure M funds could not be used for the remaining portion of the project. As a result, additional appropriations would be required to complete the project. Depending on the design modifications directed by Council, staff estimates that additional appropriations of up to \$400,000 may be required for this project. Council may consider appropriating funding for the modified project as part of the budget process for Fiscal Year 2022-2023.

General Fund and Measure M resources were used to fund the current design of the project. Public Works staff discussed the potential scope change with Las Virgenes-Malibu Council of Governments staff who indicated that eliminating the active transportation portion of the project may not require the City to repay to Metro any Measure M funds provided to the City thus far. After Metro's final audit of the project, the remaining Measure M funds may be available for programming toward other Measure M-eligible City projects.



WORK PLAN: This item was included as Items 8.v. in the Adopted Work Plan for Fiscal Year 2021-2022.

DISCUSSION: In 2016, the Public Works Commission brought to staff's attention the parking and pedestrian issues on Westward Beach. There is not enough parking on Westward Beach Road to accommodate the public. Vehicles stop in the travel lanes and wait for an available parking space, which causes the traffic to back up on Westward Beach Road and eventually on Pacific Coast Highway (PCH). The back-up of traffic creates a public safety issue because stopped vehicles can prevent access for emergency vehicles along Westward Beach Road to the beach or Point Dume neighborhood. The Commission was concerned that the existing shoulder area is not sufficient to allow parking on the beach side of the road. Vehicles parked in this area often block a portion of the travel lane while parking. The Commission also noted that pedestrians often walk into the street, creating an additional safety concern.

At the Special Budget Workshop on May 2, 2017, the City Council requested that funding be added to the Budget for Fiscal Year 2017-2018 for the design of a capital improvement project for improvements to parking and the roadway on Westward Beach to increase safety in the area.

The Public Works Department developed potential solutions to the safety problems along Westward Beach Road. A draft plan was presented to the Public Works Commission on February 28, 2018. The proposed improvements included 45-degree angled parking along the beach side, pavement improvements on the land side to improve the parallel parking, a 12-foot wide pedestrian and cycling pathway, and a sand barrier. The proposed 45-degree angled parking would generate approximately 35 additional parking spaces along Westward Beach and would assist in the parking deficiency. The 12-foot pathway is located beyond the 45-degree angled parking spaces on the beach side and would allow the public to walk and cycle in a safe location off Westward Beach Road. Finally, a sand barrier was proposed to prevent sand from blowing on the pathway and parking area to solve a chronic maintenance issue. The Commission provided comments on the design.

On June 26, 2019, staff returned to the Public Works Commission with a revised design for the Westward Beach Improvements Project. The Commission discussed the project design, including the proposed bicycle route improvements from PCH to the new parking and pathway area. Bicycle route improvement alternatives were proposed, and the Public Works Commission recommended adding a Class II bike lane from PCH to the existing restrooms on Westward Beach Road.

The proposed improvements extended approximately 30 feet from the southerly edge of the existing pavement. The existing roadway edge has deteriorated over time, and vehicles currently park partly on the sand, which creates an additional environmental



concern. The upgraded roadway and new parking were designed completely within the City's right-of-way. The proposed pathway and public access improvements encroach on average 12 to 15 feet into the property owned by Los Angeles County Beaches and Harbors (Beaches and Harbors). Staff has been working with Beaches and Harbors to develop a memorandum of understanding (MOU) that includes permission for the City to extend the improvements within Beaches and Harbors' property.

City staff had discussions with California Coastal Commission (CCC) staff regarding the improvements at Westward Beach. CCC staff indicated initial support for the project but stated that Policy 2.20 in the Local Coastal Program (LCP) Land Use Plan (LUP) needed to be amended to allow a portion of the improvements to encroach on the sandy beach. At that time, the LUP language allowed only lifeguard stations, small visitor-serving concessions, trash and recycling receptacles, and physically-challenged access improvements to encroach on sandy beach areas, so long as adverse coastal impacts are minimized. On September 23, 2019, the City Council adopted Resolution No. 19-43 initiating the proposed Local Coastal Plan Amendment (LCPA) to make minor changes to LUP Policy 2.20. The Planning Commission held a public hearing on October 21, 2019 to review the proposed LCPA. On November 25, 2019, the City Council adopted Resolution No. 19-49 amending the LCPA to modify LUP Policy 2.20 pertaining to public improvements to public sandy beach areas in order to facilitate the City's Westward Beach Road Improvements Project.

Based on the discussions with CCC staff and, as approved in Resolution No. 19-49, the revised LUP policy reads:

2.20 New public beach facilities shall be limited to only those structures which provide or enhance public recreation activities. No development shall be permitted on sandy public beach areas, except that lifeguard stations, small visitor serving concessions, trash and recycling receptacles, and public access improvements may be permitted when sited and designed to minimize adverse impacts to public access, visual resources and environmentally sensitive habitat areas and marine resources.

The CCC certified the LCPA on March 13, 2020 with no changes made.

Funding for this project was obtained through Measure M Transportation Funds. The project was approved by the Los Angeles County Metropolitan Transportation Authority (Metro) as Active Transportation focused on improving safety for pedestrians, bicyclists, and motorists on Westward Beach Road. The scope of work for the project was reviewed and approved by Metro. On November 23, 2020, the City Council authorized executing the funding agreement with Metro. Per the funding agreement, the Measure M funding will expire on June 30, 2023.



On September 20, 2021, a coastal development permit (CDP) for the Westward Beach project was approved by the Planning Commission. Shortly after the Planning Commission approval, an appeal of the CDP was filed with the CCC. Additionally, staff received messages from the public regarding concerns about the proposed improvements related to sea level rise and beach erosion at the nearby Beaches and Harbors parking lot access road. Staff met with two members of the Public Works Commission and the public regarding the project and the current beach issues.

Due to the concerns raised about current beach conditions at the site, staff brought an item to City Council on December 13, 2021 to provide a project update and to receive direction on how to proceed with this project. Council directed staff to bring the project back to the Public Works Commission and Public Safety Commission to review and provide Council with any design modifications.

At a Joint Special meeting of the Public Works Commission and Public Safety Commission on January 20, 2022, the Commissions recommended staff bring back redesign options for the Westward Beach Improvements Project. The Commissions recommended the redesign include signage, pedestrian safety enhancements, speed humps, bicycle and traffic control, no walls or head-in parking. The Commissions requested all design changes be placed within the current City right-of-way and include both sides of the road.

At the February 23, 2022 Joint Special Meeting of the Public Works Commission and Public Safety Commission, staff presented the following design alternatives:

- **Design Alternative 1** – Construct a new eight-foot-wide walkway on the beach side. All improvements will be within the City's right-of-way (Attachment 1).
- **Design Alternative 2** – Construct a new eight-foot-wide walkway on both sides of the street. Additional street alignment modifications would be needed to keep all improvements within the existing right-of-way (Attachment 2).
- **Design Alternative 3** – Construct a new eight-foot-wide walkway on the land side. All improvements will be within the City's right-of-way (Attachment 3).
- **Design Alternative 4** – Abandon the project.

The Public Works Commission and Public Safety Commission approved a motion with the following design alternatives:

- Remove the proposed walkway on the southern (coastal) portion of Westward Beach Road.
- Eliminate the proposed 45-degree parking layout and maintain the current parallel parking configuration along Westward Beach Road.



- Repave Westward Beach Road, including repairing the existing southernly shoulder area (ocean side). The repair of the existing shoulder shall not extend beyond 11 feet from the City's right of way line.
- Repair the landside shoulder, to the fullest extent possible, without retaining walls to accommodate the existing parallel parking.
- Install new "share the road" pavement markings on Westward Beach Road.
- Add additional traffic striping to delineate parking spaces on Westward Beach Road.
- Install speed humps on Westward Beach Road from PCH to Birdview Avenue.

The Public Works Commission and Public Safety Commission also recommended to have the project brought back to the commissions in approximately eight months to one year following the completion of the project for further evaluation of whether additional work to improve public safety and emergency access along Westward Beach Road should be considered.

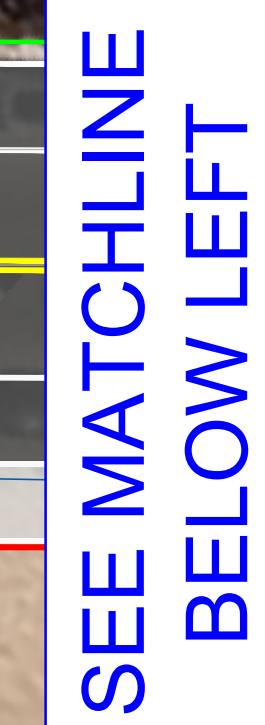
Staff is seeking direction from the Council regarding design modifications to the Westward Beach Improvements project.

ALTERNATIVES: As an alternative, Council may elect to cancel the entire project and keep the existing improvements as is.

ATTACHMENTS:

1. Design Alternative 1
2. Design Alternative 2
3. Design Alternative 3

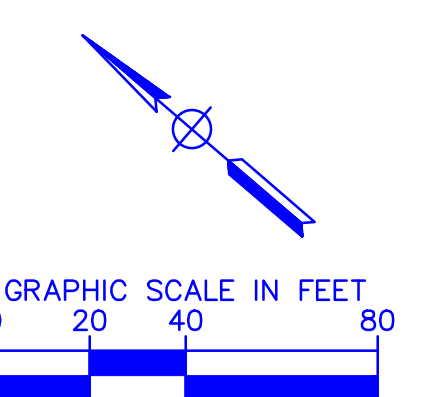




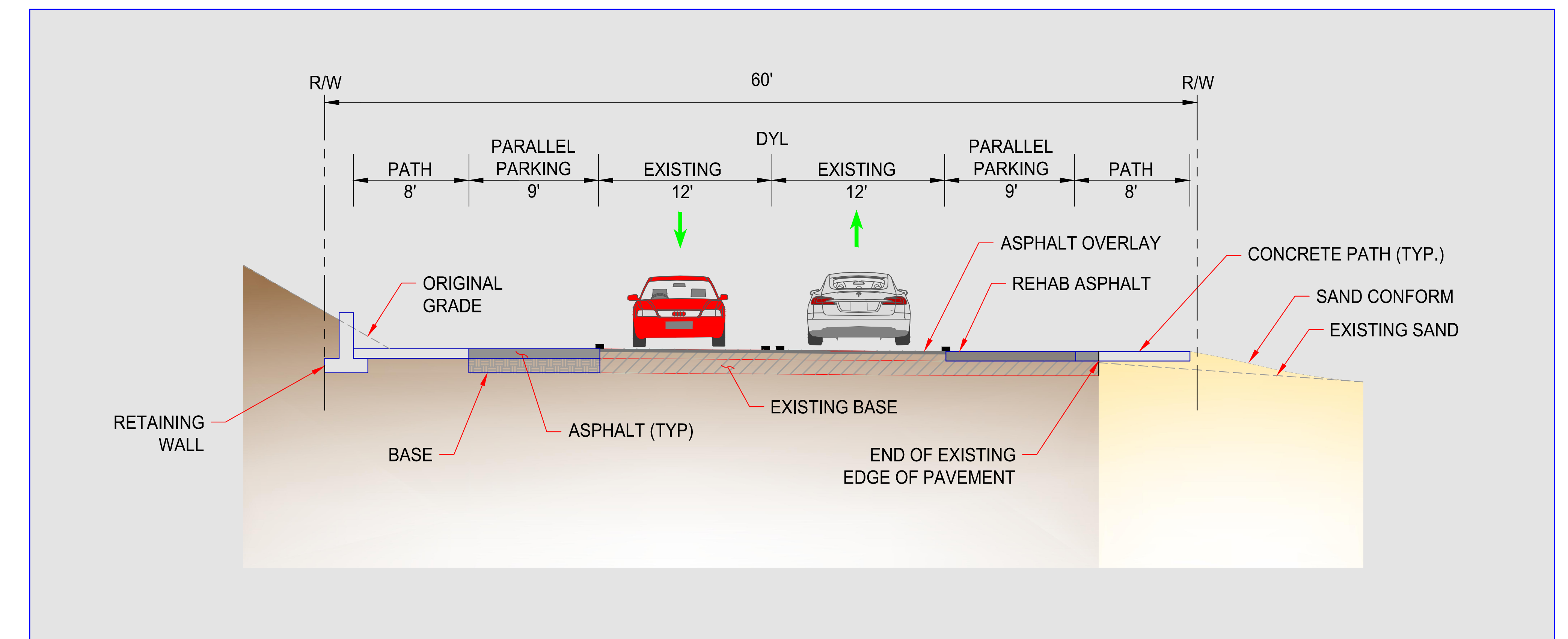
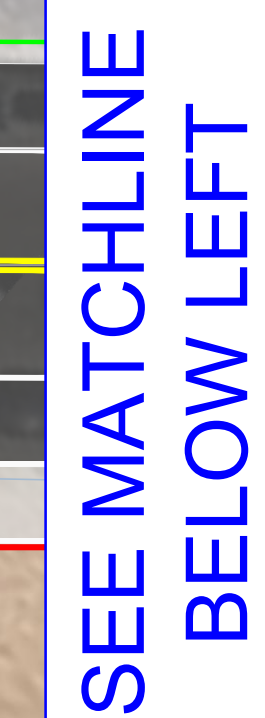
22.0'

9.0'

PARALLEL  
PARKING





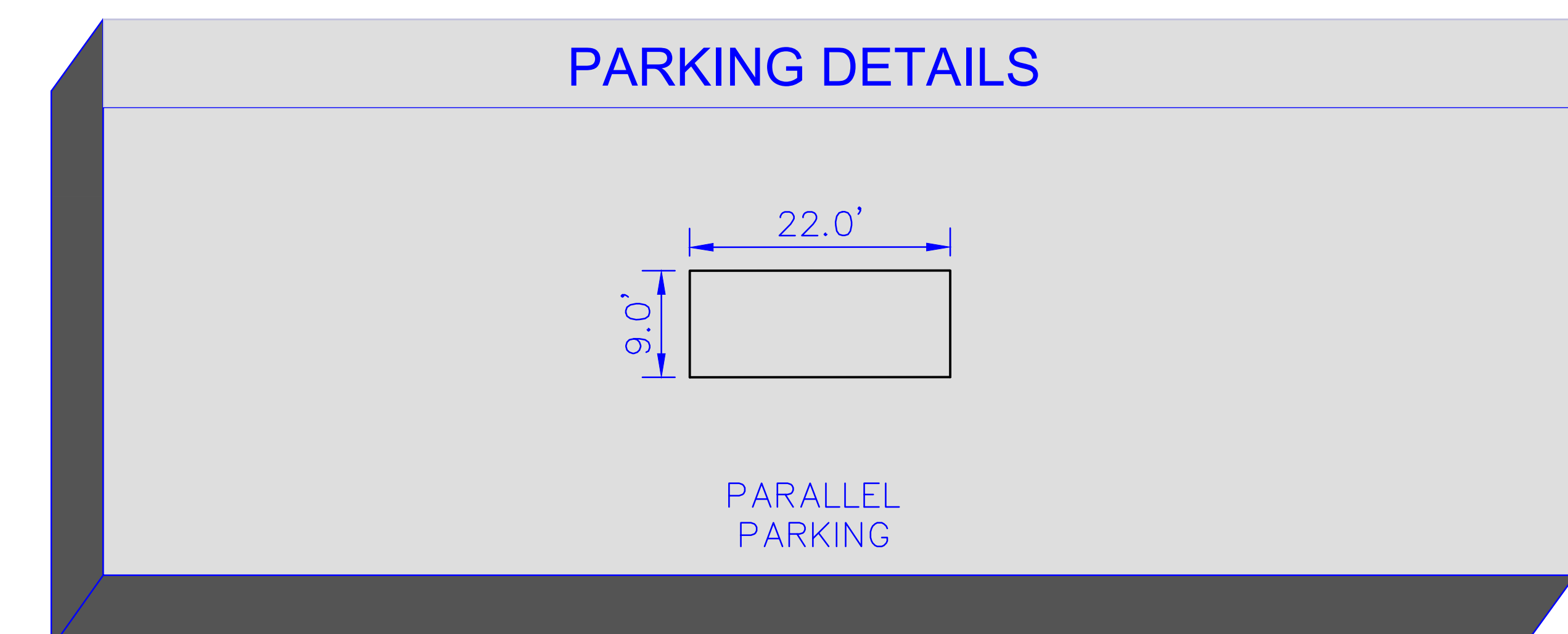


SECTION A-A

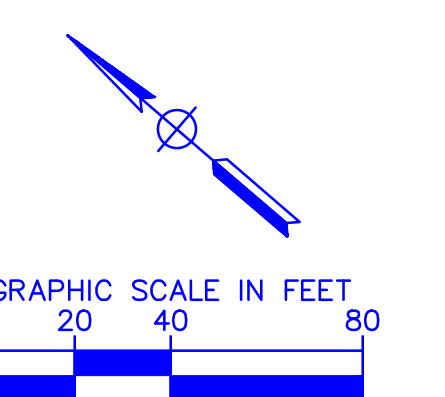
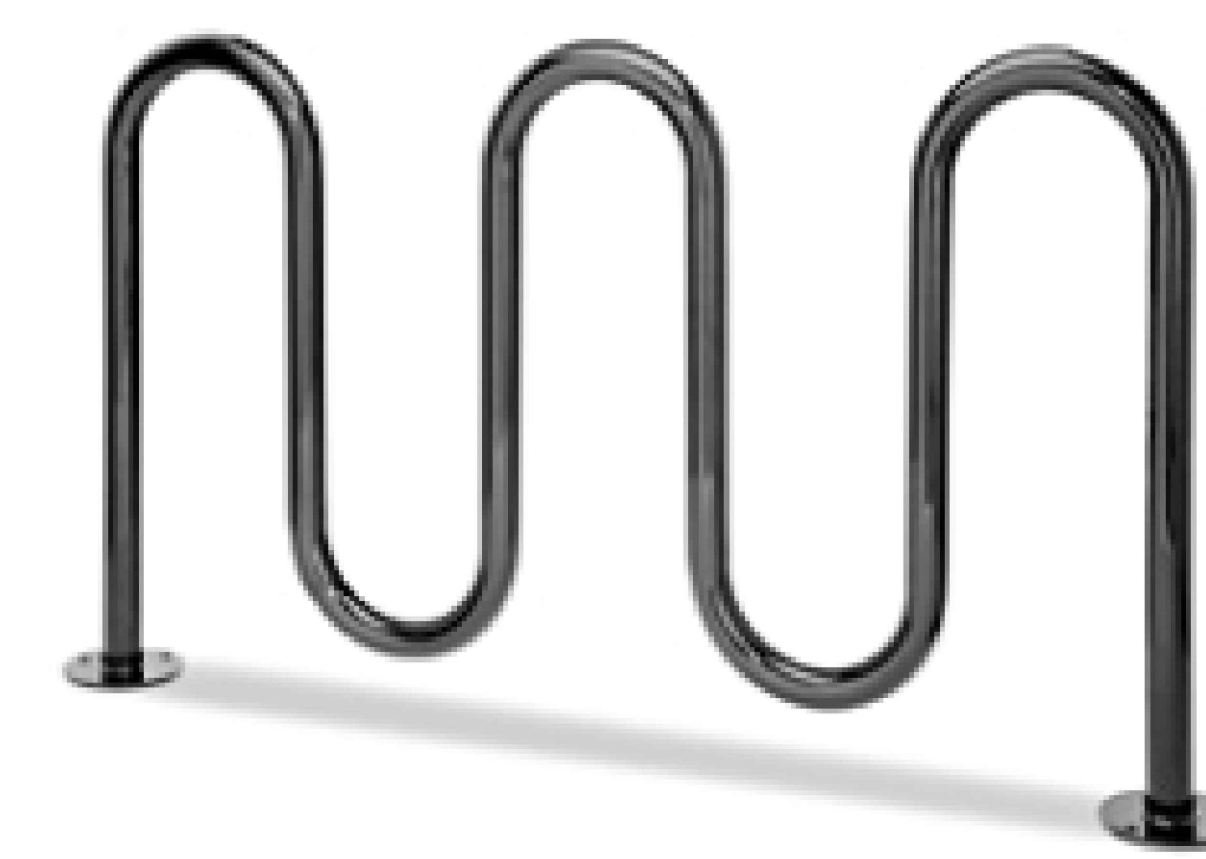
---

NTS

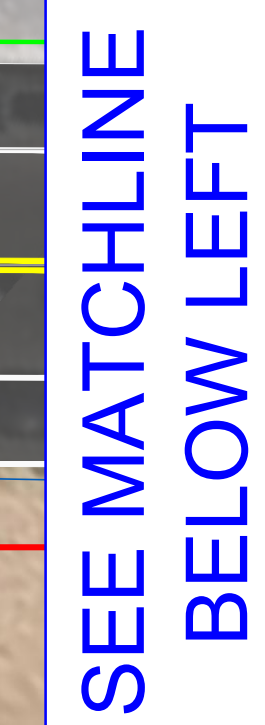
WESTWARD BEACH ROAD PROPOSED PARKING		
	Parking Spaces	Accessible Spaces
45 Degree Parking Stall	-	-
90 Degree Parking Stall	-	5
Parallel Parking	111	-
Total Parking Spaces	111	5



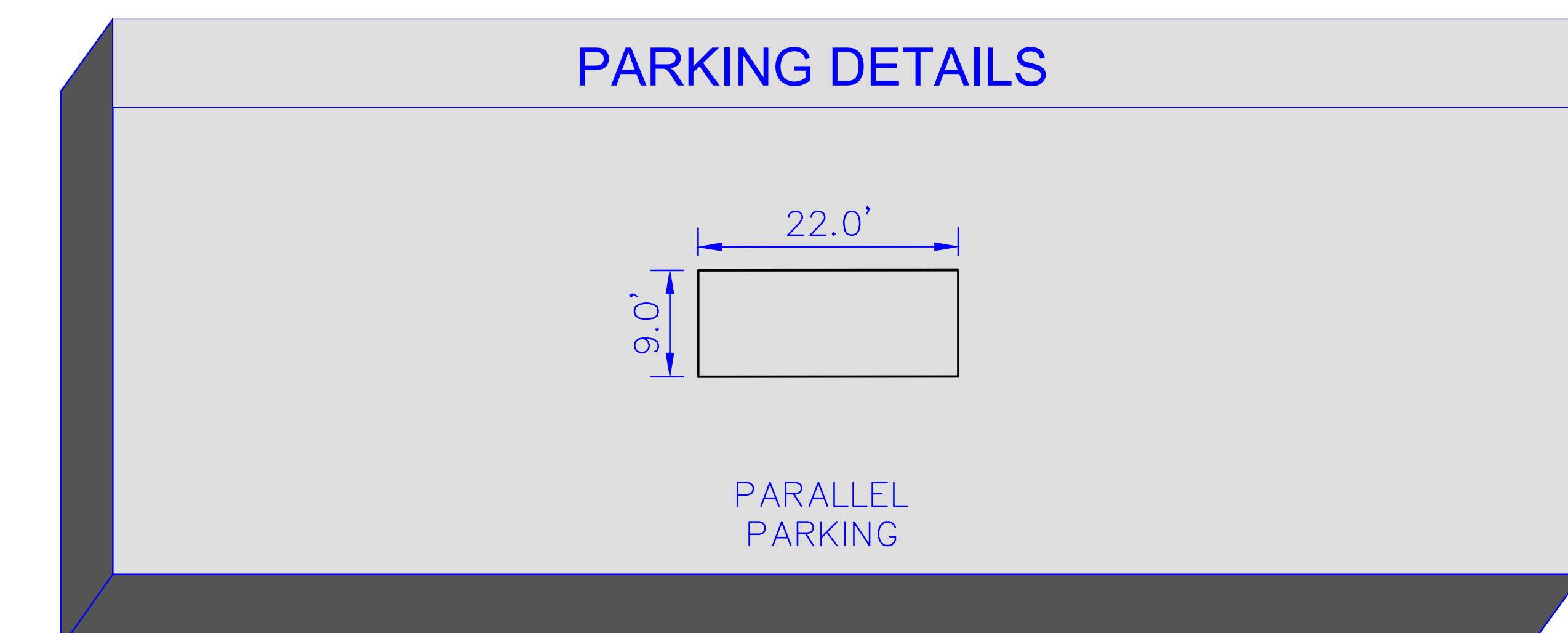
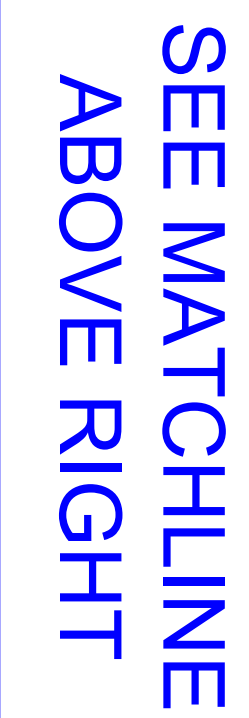
## SAMPLE BIKE RACKS







WESTWARD BEACH ROAD PROPOSED PARKING		
	Parking Spaces	Accessible Spaces
45 Degree Parking Stall	-	-
90 Degree Parking Stall	-	5
Parallel Parking	113	-
Total Parking Spaces	113	5



## SAMPLE BIKE RACKS

